

PART NUMBER

CH100, CH101, CH102, CH103

COMPONENT SPECIFICATION



ISSUE 10

Component Specification Transistor Optocouplers With Very Low Operating Temperatures

Features

- Total Ionizing Dose tested to 150 Krad(si)
- Displacement Damage to 1 MEV x 10¹²
- Low Temperature Operation up to -150°C
- 4-pin Surface Mount Package
- Flexibility in Design for mounting styles
- High Current Transfer Ratio
- High Isolation Voltage up to 1,000Vdc

Applications

- Space Equipment and Systems
- Military and High Reliability Systems
- Medical Instruments
- Suitable for Hybrid Packaging
- MOS/CMOS Applications
- Data Transmission
- Power Supply
- Logic Interfacing

DESCRIPTION

The CH100 series is a single channel radiation hard optically coupled isolator. It is composed of an infrared emitting diode and a silicon phototransistor.

The CH100 has been designed and manufactured to meet the requirements of very low temperatures experienced in harsh environments encountered by space applications. These devices can be wire bonded within a hybrid application or mounted directly onto a PCB board offering the customer flexibility in their design. Package styles for this device include a 4-pin surface mount package, with solder dip option available.

Absolute maximum ratings, recommended operating conditions, electrical specifications and performance characteristics are identical for all units. Any exceptions, due to packaging variations and limitations, are as noted.



ISOCOM Limited is AS9100 certified for the design and manufacture of electronic and optoelectronic components.

For sales enquiries, or further information, please contact our sales office at:

ISOCOM Limited • 2 Fern Court • Bracken Hill Business Park • Peterlee • County Durham • SR8 2RR • United Kingdom
Email: sales@isocom.uk.com • Tel: +44 (0)191 416 6546

STANDARDS

The following specifications have been included in the manufacturing of this product:

Aerospace Compliance Standards

AS9100D / ISO 9001:2015 – Design & Manufacture of Electronic and Optoelectronic Components (Ref GB15/92780)

Military Compliance Specifications

MIL-PRF-38534 – General Specification for Hybrid Microcircuits
 MIL-PRF-19500 – General Specification for Discrete Semiconductor Devices

Military compliance standards

MIL-STD-202 – Test Method Standard Electronic and Electrical Component Parts
 MIL-STD-883 – Test Method Standard Microcircuits
 MIL-STD-750 – Test Method Standard for Semiconductor Devices

SCREENING INFORMATION

Our products can be screened to MIL-PRF-38534, applying test methods from MIL-STD-883; MIL-PRF-19500, applying test methods of MIL-STD-750; or a combination thereof. Please contact us for more information relating to the applicable screening processes.

AMENDMENT RECORD

Issue No.	Date	Description
1	December 2013	First issue.
2	May 2018	Updated 'Standards' section.
3	October 2018	Outline drawing amended. Added front cover.
4	May 2019	Updated 'Standards' section, Screening, Group Test and Hermetically sealed information removed.
5	August 2019	Updated electrical characteristics.
6	September 2020	Updated Quality Management Logos and removed IECQ Logos
7	May 2022	Added Radiation Testing and Electrical Testing Diagrams
8	June 2022	Updated Electrical Characteristic Graphs and Added Screening Flow
9	June 2023	Updated Marking Image
10	August 2023	Added pin configuration, updated screening and updated circuit drawings

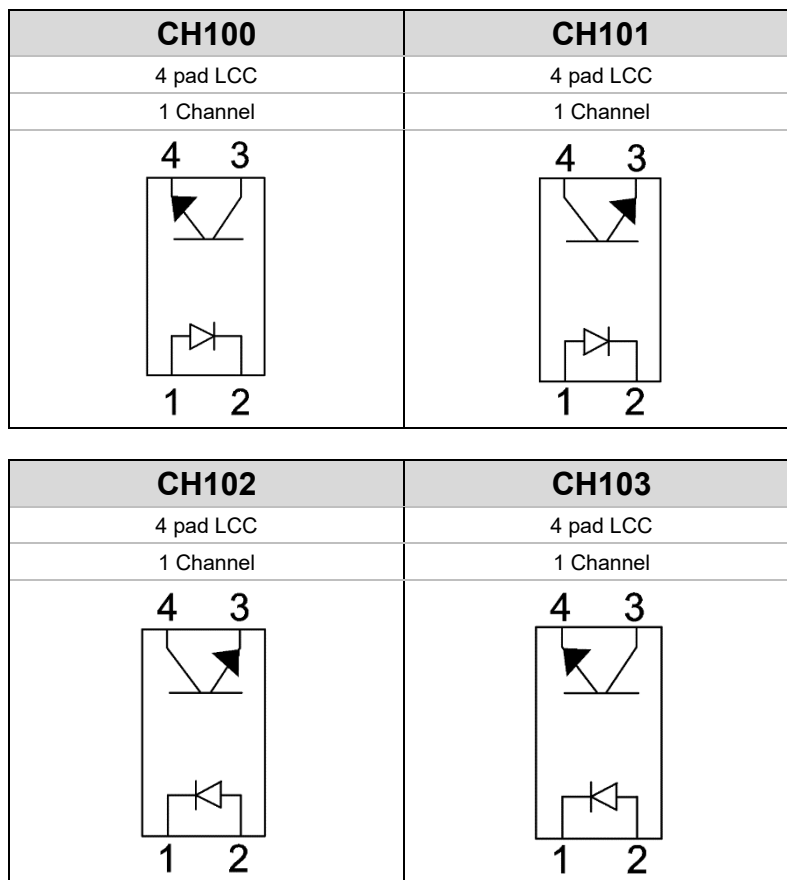
For sales enquiries, or further information, please contact our sales office at:

ISOCOM Limited • 2 Fern Court • Bracken Hill Business Park • Peterlee • County Durham • SR8 2RR • United Kingdom
 Email: sales@isocom.uk.com • Tel: +44 (0)191 416 6546

SELECTION GUIDE PACKAGE STYLES AND CONFIGURATION OPTIONS

ISOCOM Part Number and Options	
Package	4-pin Surface Mount
Lead Style	-
Channels	1
Common Channel Wiring	-
Commercial	CH100 CH101 CH102 CH103
Defense Screen Level	CH100/L2 CH101/L2 CH102/L2 CH103/L2
Space Screen Level	CH100/L2S CH101/L2S CH102/L2S CH103/L2S
Standard Finish	Gold Plating
Solder Dipped	Option 20

FUNCTIONAL DIAGRAMS



For sales enquiries, or further information, please contact our sales office at:

ISOCOM Limited • 2 Fern Court • Bracken Hill Business Park • Peterlee • County Durham • SR8 2RR • United Kingdom
 Email: sales@isocom.uk.com • Tel: +44 (0)191 416 6546

PIN OUT

CH100	Pin number	function
	1	Anode
	2	Cathode
	3	Collector
4	Emitter	

CH102	Pin number	function
	1	Cathode
	2	Anode
	3	Emitter
4	Collector	

CH101	Pin number	function
	1	Anode
	2	Cathode
	3	Emitter
4	Collector	

CH103	Pin number	function
	1	Cathode
	2	Anode
	3	Collector
4	Emitter	

DEVICE MARKING

FRONT OF DEVICE



ISOCOM Part Number



Manufacturer



Date Code (XX Year XX Week)

BACK OF DEVICE



Serialisation



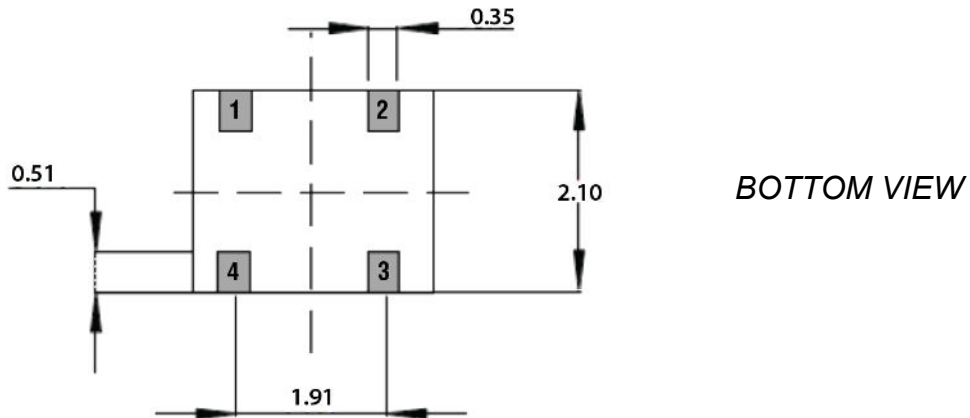
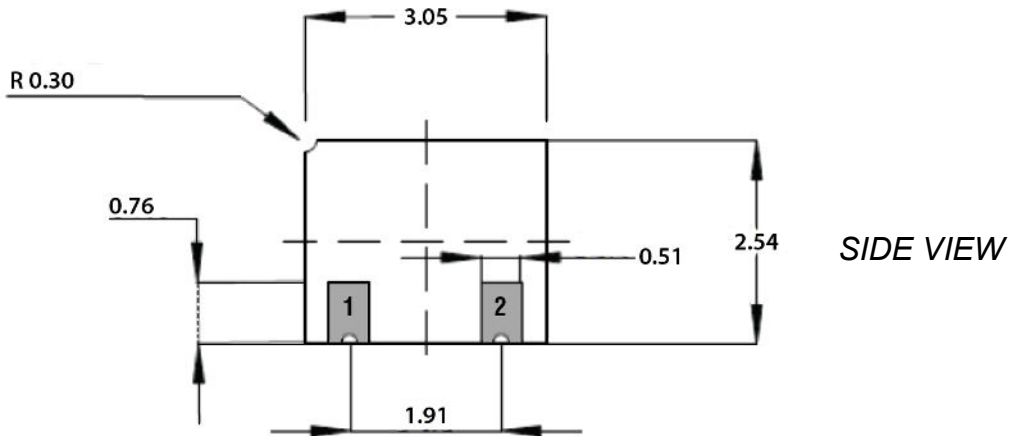
Batch ID

FOR SPACE SCREENED PARTS ONLY

For sales enquiries, or further information, please contact our sales office at:

ISOCOM Limited • 2 Fern Court • Bracken Hill Business Park • Peterlee • County Durham • SR8 2RR • United Kingdom
Email: sales@isocom.uk.com • Tel: +44 (0)191 416 6546

OUTLINE DRAWINGS



For sales enquiries, or further information, please contact our sales office at:

ISOCOM Limited • 2 Fern Court • Bracken Hill Business Park • Peterlee • County Durham • SR8 2RR • United Kingdom
Email: sales@isocom.uk.com • Tel: +44 (0)191 416 6546

ABSOLUTE MAXIMUM RATINGS

T_A = 25°C U.O.S.

Storage Temperature	-65°C to +150°C	
Operating Temperature	-55°C to +125°C	
Lead Soldering Temperature	260°C 1.6mm from case for 10 seconds	
Input-to-Output Isolation Voltage	↑ 1,500 V _{DC}	
Input Diode		
Forward DC Current	50mA	
Reverse DC Voltage	7V	
Peak forward Current	1.5A	≤ 10μs
Power Dissipation	150mW	
Output Transistor		
Collector-Emitter Voltage	70V	
Emitter-Collector Voltage	7V	
Collector-Base Voltage	70V	≤ 10μs
Collector Current	100mA	t = 1ms
Power Dissipation	150mW	Derate linearly above 100°C at 1.4W/°C
Coupled Device		
Power Dissipation	360mW	
Soldering Temperature, Soldering Iron	260.5°C	This part shall not be re-soldered until 3 minutes have elapsed.
Soldering Temperature, Vapour Phase	220.40°C	This part shall not be re-soldered until 3 minutes have elapsed.
ESD Classification	Class 2	Class 2 with minimum critical path voltage of 4,000 to 15,999V. MIL-STD-883

For sales enquiries, or further information, please contact our sales office at:

ISOCOM Limited • 2 Fern Court • Bracken Hill Business Park • Peterlee • County Durham • SR8 2RR • United Kingdom
 Email: sales@isocom.uk.com • Tel: +44 (0)191 416 6546

ELECTRICAL CHARACTERISTICS

T_A = 25°C U.O.S.

Parameter	Symbol	Test Conditions	Min	Type	Max	Units
Input Diode Electrical Characteristics						
Forward Voltage	V _F	I _F = 10mA	1.3	–	1.8	V
		I _F = 10mA -55°C	1.3	–	1.8	V
		I _F = 10mA +125°C	1.1	–	1.8	V
Reverse Current	I _R	V _R = 2.0V	–	–	100	µA
Output Detector Electrical Characteristics						
Collector-Emitter Breakdown Voltage	V(BR) _{CEO}	I _{CE} = 1mA	70	100	–	V
Emitter-Collector Breakdown Voltage	V(BR) _{ECO}	I _{EC} = 0.1mA	7	9	–	V
Collector–Emitter Leakage Current	I _{CEO}	V _{CE} = 20V, I _F = 0A	–	7	100	µA
		V _{CE} = 20V, I _F = 0A, -55°C	–	–	100	µA
		V _{CE} = 20V, I _F = 0A, +125°C	–	10	150	µA
Coupled Electrical Characteristics						
DC Current Transfer Ratio	I _C /I _F	I _F = 1.0mA, V _{CE} = 5V	100	–	–	%
		I _F = 10.0mA, V _{CE} = 5V (Note 1)	150	–	–	%
Collector-Emitter Saturation Voltage	V _{CE} (Sat)	I _C = 10.0mA I _F = 20mA	–	–	0.3	V
Isolation Voltage	V in-out	T = 5s (Note 2)	–	1000	–	V _{dc}
Input to Output Resistance	R in-out	V _{IO} = 500V (Note 2)	–	10 ⁵	–	Ω
Rise Time	t _r	R _L = 100Ω, V _{CC} = 10V, I _F = 10mA	–	7	20.0	µs
Fall Time	t _f	R _L = 100Ω, V _{CC} = 10V, I _F = 10mA	–	7	20.0	µs

Notes

1. Sample and hold pulse shall not be longer than 0.1 seconds. Duty cycle shall be 10%.
2. Measurements with inputs shorted together and outputs shorted together.

ELECTRICAL MEASUREMENTS DURING AND ON COMPLETION OF RADIATION TESTING

Parameter	Symbol	Test Conditions	Min	Max	Units
Input Diode Forward Voltage	V _F	I _F = 10Ma	1.3	1.8	V
Input Diode Reverse Current	I _R	V _R = 2.0V	–	100	µA
Photo Transistor Collector-Emitter Dark Current	I _{CEO}	V _{CE} = 20v, I _F = 0A	–	100	µA
Coupled Current Transfer Ratio	I _C	I _F = 1.0Ma, V _{CE} = 5V	100	–	%
		I _F = 10.0Ma, V _{CE} = 5V (note 1)	150	–	%
Collector-Emitter Saturation Voltage	V _{CE} (Sat)	I _C = 10.0Ma, I _F = 20Ma	–	0.3	V

Notes

1. Sample and hold pulse shall be no longer than 0.1 seconds. Duty cycle shall be 10%.
2. Please note that if you require any parameters to be controlled to meet your design needs such as CTR, V_F, I_{CEO}, V_{CE}(SAT), please contact ISOCOM Limited customer service team. We also offer a selection of screening procedures that will match your needs.

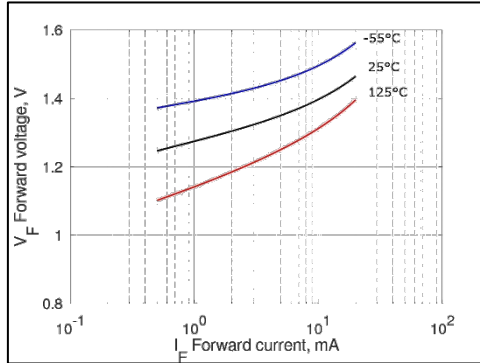
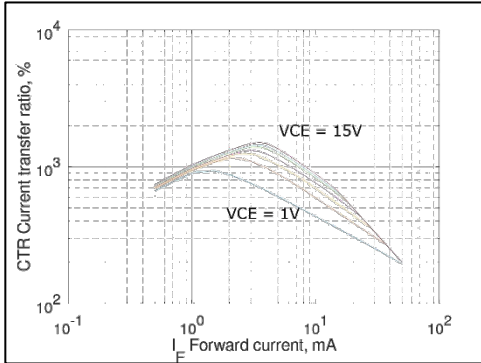
For sales enquiries, or further information, please contact our sales office at:

ISOCOM Limited • 2 Fern Court • Bracken Hill Business Park • Peterlee • County Durham • SR8 2RR • United Kingdom
Email: sales@isocom.uk.com • Tel: +44 (0)191 416 6546

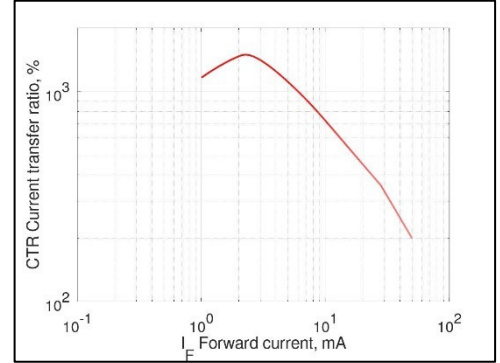
ELECTRICAL CHARACTERISTICS

Typical Graphs – Contact Office for more information

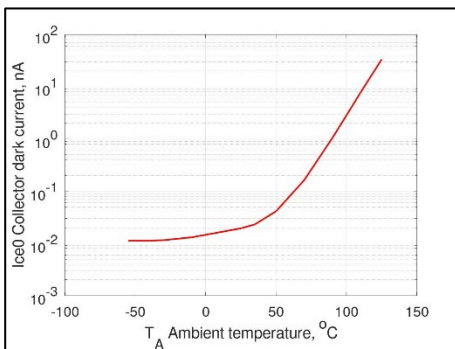
VCE = 1,3,5,7,10,12 and 15V



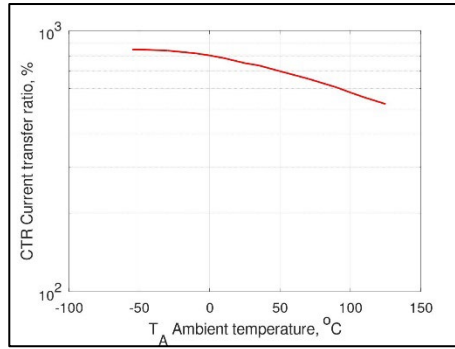
CTR vs IF: VCE = 5V TA = 25°C



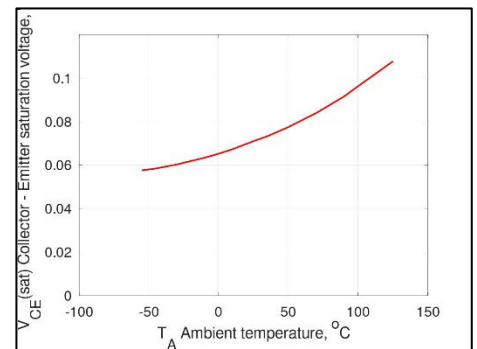
Ice0 vs TA: VCE = 20V



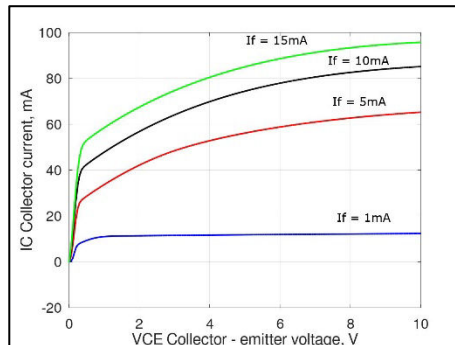
CTR vs TA: If = 10mA VCE = 5V



VCE(sat) vs TA: If = 20mA IC = 10mA



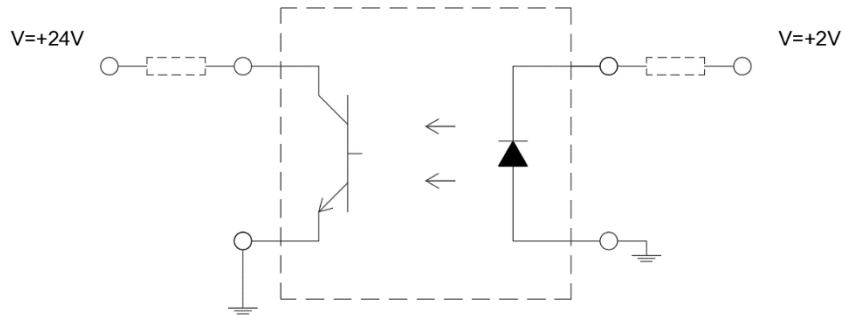
IC vs VCE: TA = 25°C



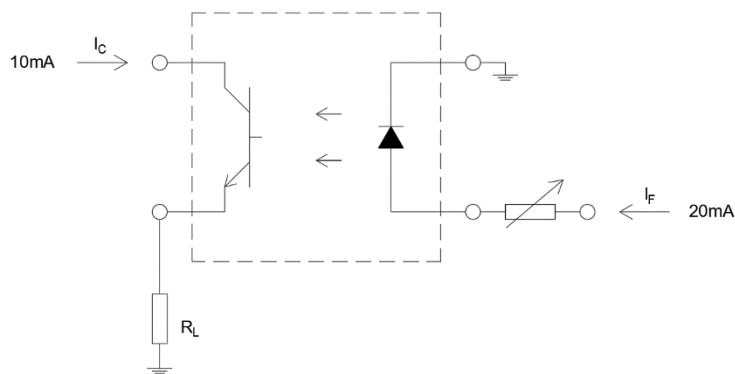
For sales enquiries, or further information, please contact our sales office at:

ISOCOM Limited • 2 Fern Court • Bracken Hill Business Park • Peterlee • County Durham • SR8 2RR • United Kingdom
 Email: sales@isocom.uk.com • Tel: +44 (0)191 416 6546

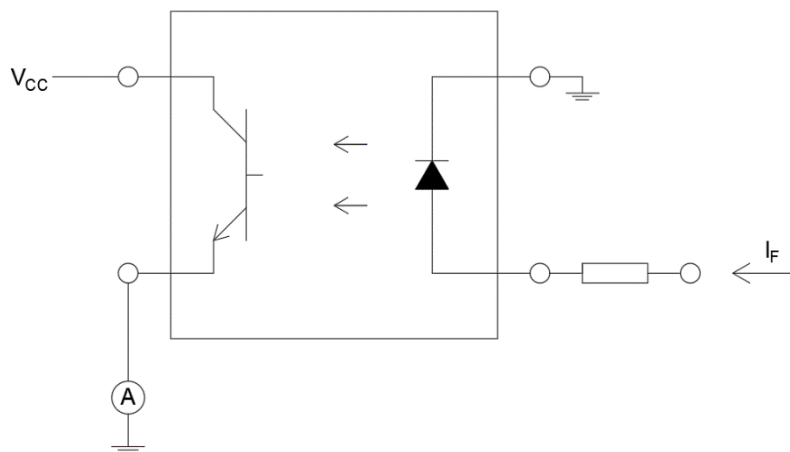
HTRB TEST CIRCUIT



ELECTRICAL CIRCUIT FOR BURN-IN AND OPERATING LIFE TESTS



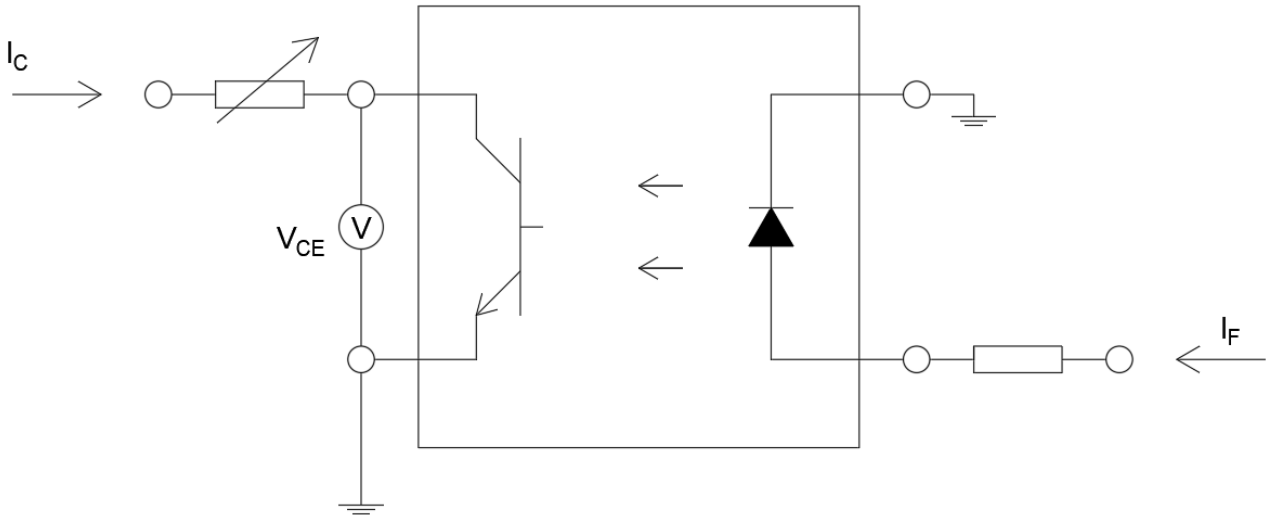
ELECTRICAL MEASUREMENT OF COLLECTOR CURRENT



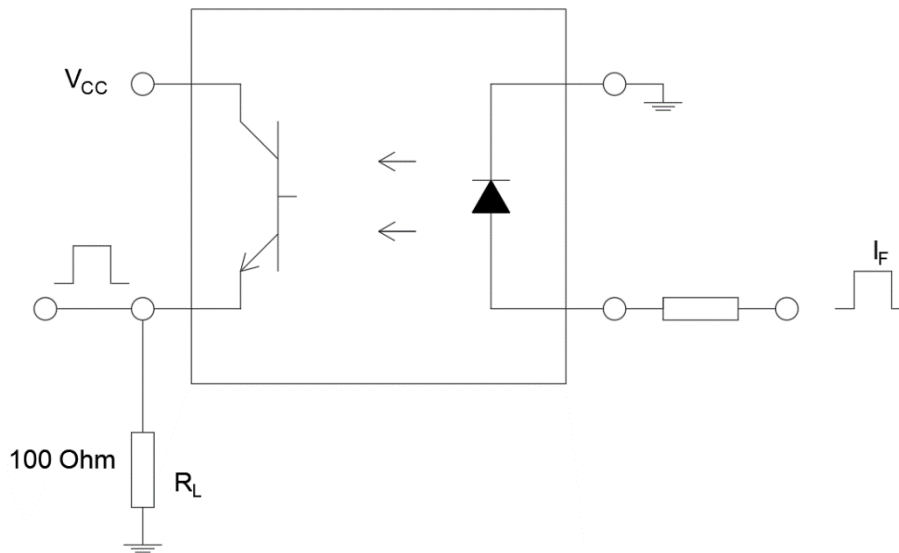
For sales enquiries, or further information, please contact our sales office at:

ISOCOM Limited • 2 Fern Court • Bracken Hill Business Park • Peterlee • County Durham • SR8 2RR • United Kingdom
Email: sales@isocom.uk.com • Tel: +44 (0)191 416 6546

ELECTRICAL MEASUREMENT OF COLLECTOR EMITTER SATURATION VOLTAGE



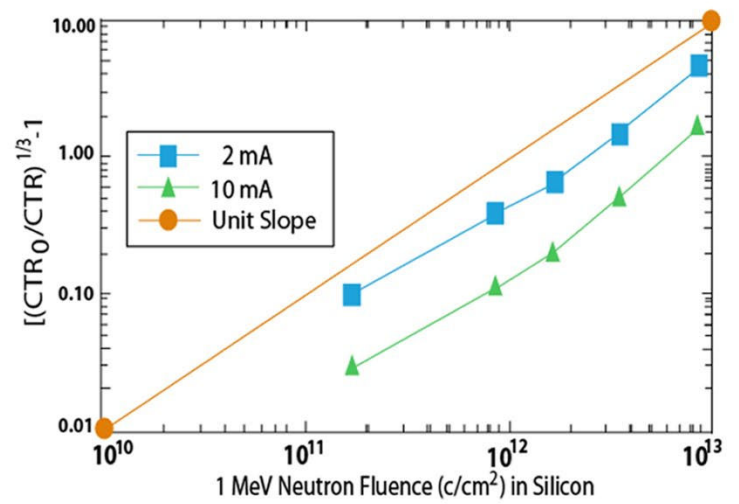
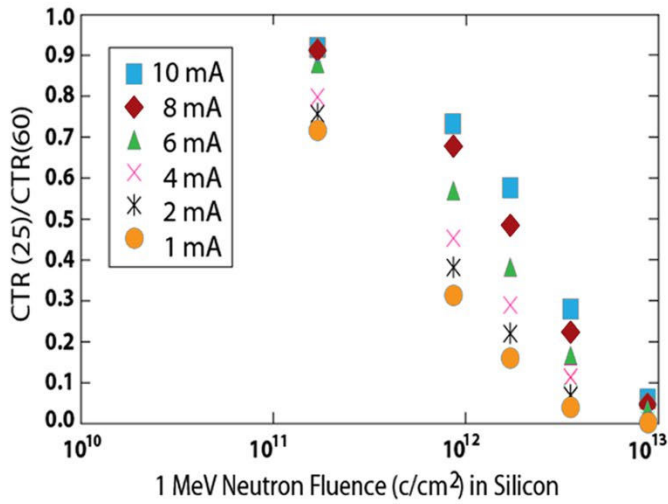
ELECTRICAL MEASUREMENT OF A.C. PARAMETERS



For sales enquiries, or further information, please contact our sales office at:

ISOCOM Limited • 2 Fern Court • Bracken Hill Business Park • Peterlee • County Durham • SR8 2RR • United Kingdom
Email: sales@isocom.uk.com • Tel: +44 (0)191 416 6546

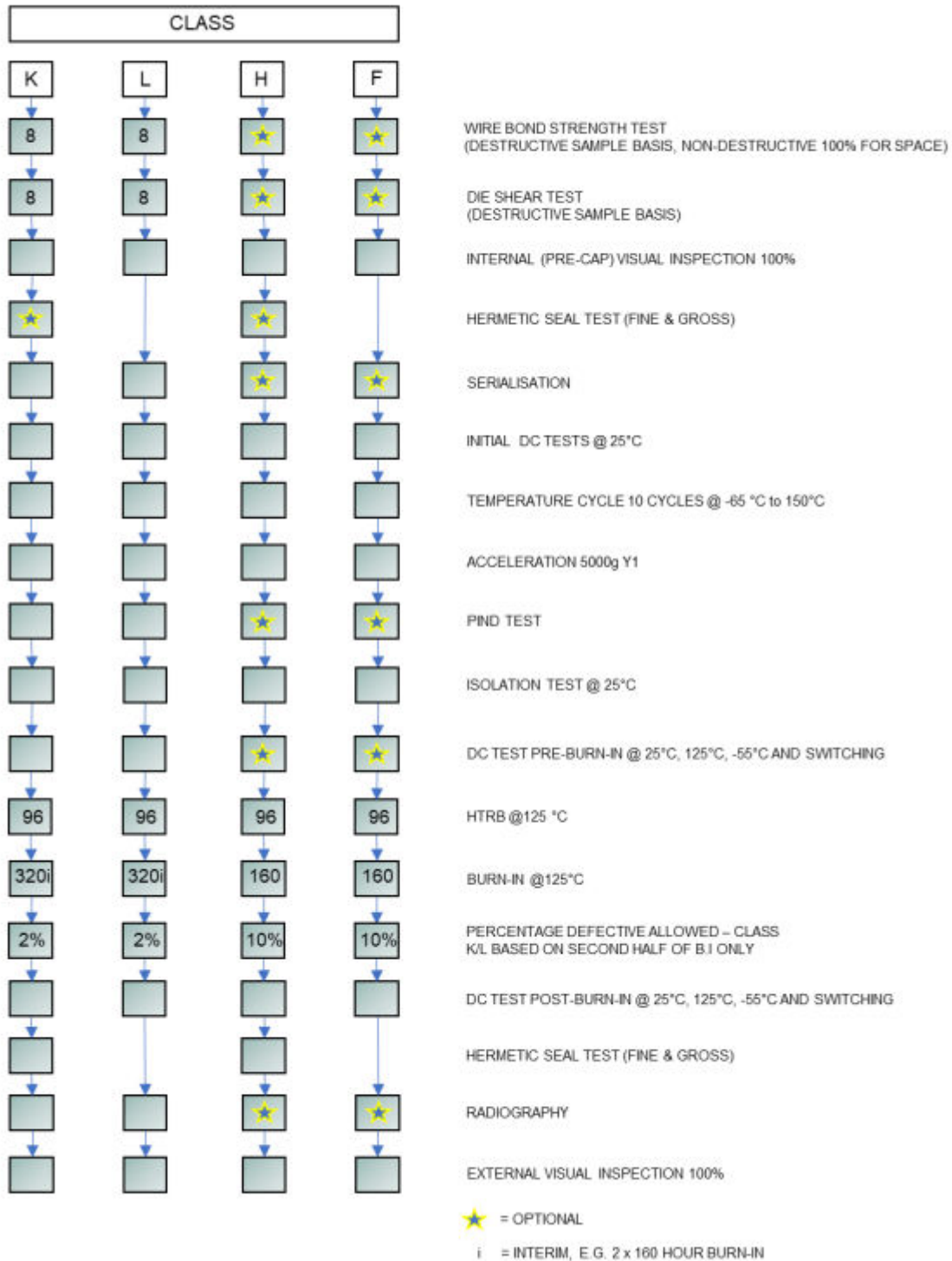
RADIATION TESTING



For sales enquiries, or further information, please contact our sales office at:

ISOCOM Limited • 2 Fern Court • Bracken Hill Business Park • Peterlee • County Durham • SR8 2RR • United Kingdom
Email: sales@isocom.uk.com • Tel: +44 (0)191 416 6546

SCREENING IN ACCORDANCE WITH MIL-PRF 38534



For sales enquiries, or further information, please contact our sales office at:

ISOCOM Limited • 2 Fern Court • Bracken Hill Business Park • Peterlee • County Durham • SR8 2RR• United Kingdom
Email: sales@isocom.uk.com • Tel: +44 (0)191 416 6546

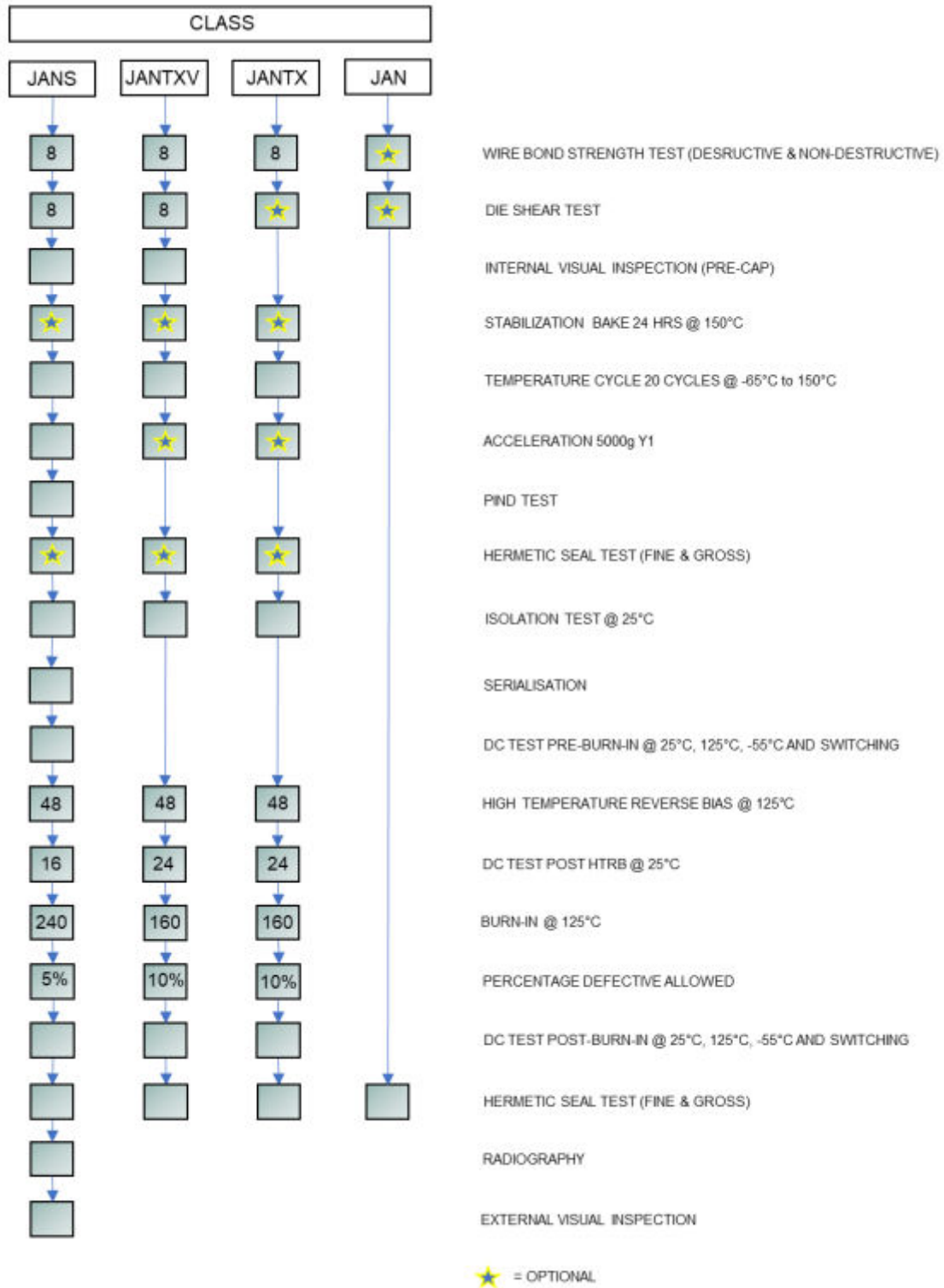
The following screening flow includes the electrical tests between each screening step, the referenced test method from MIL-STD 883 and the sample basis for Class K/L and H/F quality levels.

Operation No.	Operation	MIL-STD 883 TEST METHOD	Class	
			H/F (L2)	K/L (L2S)
1	Wire bond strength (ND)	(883) 2023	Optional	100%
2	Wire bond strength (D)	(883) 2011	Optional	8 devices
3	Die Shear	(883) 2019	Optional	8 devices
4	Internal Visual	(883) 2017	100%	100%
5	Fine leak, Helium bomb, Leak detector	(883) 1014, Con A1	Optional	Optional
6	Gross leak, Liquid bomb, -Bubble chamber	(883) 1014, Con C1	Optional	Optional
7	Serialisation of devices		Optional	100%
8	Electrical Test 25°C		100%	100%
9	Temp cycle @ -65°C to 150°C	(883) 1010, Con C, 10 cycles	100%	100%
10	Electrical Test 25°C		100%	100%
11	Constant acceleration	(883) 2001, 3000g, Y1	100%	100%
12	Electrical Test 25°C		100%	100%
13	P.I.N.D	(883) 2020, Con A	Optional	100%
14	Electrical Test 25°C		100%	100%
15	Isolation 100% @ 25°C	(MIL-STD 202) 301	100%	100%
16	Electrical Test 25°C		100%	100%
17	Electrical Test 125°C		Optional	100%
18	Electrical Test -55°C		Optional	100%
19	Switching time 100% @ 25°C		Optional	100%
20	HTRB @ 125°C - 96 hrs	(883) 1015, con A	100%	100%
21	Electrical Test 25°C		100%	100%
22	Burn in @ 125°C	(883) 1015, con B	100% 160 hours	100% 160 hrs
23	Electrical Test 25°C		100%	100%
24	Burn in @ 125°C	(883) 1015, con B	N/A	100% 160 hrs
25	Percentage defective allowable	Pre/post Burn-in electrical and delta at 25°C only	Max. 10%	Max. 2%
26	Electrical Test 25°C	Group A - SG1	100%	100%
27	Electrical Test 125°C	Group A - SG2	100%	100%
28	Electrical Test -55°C	Group A - SG3	100%	100%
29	Switching time 100% @ 25°C	Group A - SG9	100%	100%
30	Fine leak, Helium bomb, Leak detector	(883) 1014, Con A1	100%	100%
31	Gross leak, Liquid bomb, -Bubble chamber	(883) 1014, Con C1	100%	100%
32	Radiography	(883) 2012	Optional	100%
33	External Visual	(883) 2009	100%	100%

For sales enquiries, or further information, please contact our sales office at:

ISOCOM Limited • 2 Fern Court • Bracken Hill Business Park • Peterlee • County Durham • SR8 2RR • United Kingdom
 Email: sales@isocom.uk.com • Tel: +44 (0)191 416 6546

SCREENING IN ACCORDANCE WITH MIL-PRF 19500



For sales enquiries, or further information, please contact our sales office at:

ISOCOM Limited • 2 Fern Court • Bracken Hill Business Park • Peterlee • County Durham • SR8 2RR • United Kingdom
 Email: sales@isocom.uk.com • Tel: +44 (0)191 416 6546

The following screening flow includes the electrical tests between each screening step, the referenced test method from MIL-STD 750 and the sample basis for Class JANTX, JANTXV and JANS quality levels.

Operation No.	Operation	MIL-PRF 19500	Class		
			JANTX (L2)	JANTXV (L2)	JANS (L2S)
1	Wire bond strength (ND)	(883) 2023	100%	100%	100%
2	Wire bond strength (D)	(750) 2037, Con D	4 devices	4 devices	8 devices
3	Die Shear	(750) 2017	4 devices	4 devices	8 devices
4	Internal Visual	(750) 2072	Optional	100%	100%
5	Stabilization Bake		Optional	Optional	Optional
6	Electrical Test @ 25°C		100%	100%	100%
7	Temp cycle (20 cycles @ -85°C to 150°C)	(750) 1051, Con F	100%	100%	100%
8	Electrical Test @ 25°C		100%	100%	100%
9	Constant acceleration	(750) 2005, 5000g, Y1	Optional	Optional	100%
10	Electrical Test @ 25°C		100%	100%	100%
11	P.I.N.D	(750) 2052, Con A	N/A	N/A	100%
12	Electrical Test @ 25°C		N/A	N/A	100%
13	Fine leak, Helium bomb, -Leak detector	(750) 1071 Con H1	Optional	Optional	Optional
14	Gross leak, Liquid bomb, Bubble chamber	(750) 1071, Con C	Optional	Optional	Optional
15	Serialisation of devices		N/A	N/A	100%
16	Isolation 100% @ 25°C	(MIL-STD 202) 301	100%	100%	100%
17	Electrical Test @ 25°C		100%	100%	100%
18	Electrical Test @ 125°C		100%	100%	100%
19	Electrical Test @ -55°C		100%	100%	100%
20	Switching time @ 25°C		100%	100%	100%
21	HTRB (125°C)	(750) 1039, Con A (80% VDS)	100% (48 hrs)	100% (48 hrs)	100% (48 hrs)
22	Electrical Test @ 25°C		100% (24 hrs)	100% (24 hrs)	100% (16 hrs)
23	Burn-in (125°C)	(750) 1039, Con B (80% VDS)	100% (160 hrs)	100% (160 hrs)	100% (240 hrs)
24	Percentage defective allowable	Prepost Burn-in electrical and delta at 25°C only	100% @ 10% PDA	100% @ 10% PDA	100% @ 5% PDA
25	Electrical Test @ 25°C		100% (Group A, SG 2)	100% (Group A, SG 2)	100% (Group A, SG 2)
26	Electrical Test @ 125°C		100% (Group A, SG 3)	100% (Group A, SG 3)	100% (Group A, SG 3)
27	Electrical Test @ -55°C		100% (Group A, SG 3)	100% (Group A, SG 3)	100% (Group A, SG 3)
28	Switching time @ 25°C		100% (Group A, SG4)	100% (Group A, SG4)	100% (Group A, SG4)
29	Fine leak, Helium bomb, -Leak detector	(750) 1071 Con H1	100%	100%	100%
30	Gross leak, Liquid bomb, Bubble chamber	(750) 1071, Con C	100%	100%	100%
31	Radiography	(750) 2076	N/A	N/A	100%
32	External Visual	(750) 2071	N/A	N/A	100%

For sales enquiries, or further information, please contact our sales office at:

ISOCOM Limited • 2 Fern Court • Bracken Hill Business Park • Peterlee • County Durham • SR8 2RR• United Kingdom
 Email: sales@isocom.uk.com • Tel: +44 (0)191 416 6546

MIL-PRF 19500 TYPICAL QCI TESTING PROCESS FLOW

Group	Sub Group	Parameters	TM	Quantity (accept number)	
				JANS	JANTX, JANTXV
A (CI)	1	Visual and mechanical inspection	750-2071	100%	100%
	2	Static tests at +25°C	Datasheet		
	3	Static tests at min and max. rated operating temp.	Datasheet		
	4	Dynamic test at +25°C	Datasheet		
		(JANS)		Large LOT (accept)	Small LOT (accept)
B (PI)	1	Physical dimension	750-2066	22 (0)	8 (0)
	2	Solderability	750-2026	15 leads (0)	6 leads (0)
	3	Temperature cycling (100 cycles)	750-1051	22 (0)	6 (0)
		Hermetic seal (fine and gross leak)	750-1071		
		Electrical measurements	GRP-A-SG2		
		Decap internal visual	750-2075	6 (0)	6 (0)
		Bond strength	750-2037	22 wires (0) or 11 (0)	12 wires (0) or 6 (0)
		SEM	750-2077	11 (0)	6 (0)
	Die shear	750-2017	11 (0)	6 (0)	
	4	Intermittent operation life (2000 cycles)	750-1037	22 (0)	12 (0)
Electrical measurements		GRP-A-SG2			
		(JANTXV, JANTX)		Large LOT (accept)	Small LOT (accept)
B (PI)	1	Solderability	750-2026	15 leads (0)	4 leads (0)
	2	Temperature cycling (45 cycles incl. screening)	750-1051	22 (0)	6 (0)
		Hermetic Seal (fine and gross leak)	750-1071		
		Electrical measurements	GRP-A-SG2		
	3	Steady state op. life (340 Hrs) or intermittent op. life (2000 cycles)	750-1026 or 750-1037	45 (0)	12 (0)
		Electrical measurements	GRP-A-SG2		
4	Decap internal visual	750-2075	1 (0)	1 (0)	

For sales enquiries, or further information, please contact our sales office at:

ISOCOM Limited • 2 Fern Court • Bracken Hill Business Park • Peterlee • County Durham • SR8 2RR • United Kingdom
Email: sales@isocom.uk.com • Tel: +44 (0)191 416 6546

**MIL-PRF 19500 TYPICAL QCI TESTING
PROCESS FLOW**

Group	Sub Group	Parameters	TM	Sample plan	Small LOT (accept)
C (PI)	1	Physical dimensions (Not Req. JANS)	750-2066	15 (0)	6 (0)
	2	Thermal shock (25 cycles, con B)	750-1056	22 (0)	6 (0)
		Temperature cycling (45 cycles incl. screening)	750-1051		
		Terminal strength	750-2036		
		Hermetic seal (fine and gross leak)	750-1071		
		Electrical measurements	GRP-A-SG2		
	3	Constant acceleration (5000g, Y1 only)	750-2006	22 (0)	6 (0)
		Electrical measurements	GRP-A-SG2		
	6	Steady state op. life (1000 Hrs) or intermittent op. life (6000 cycles)	750-1026 or 750-1037	22 (0)	12 (0)
		Electrical measurements	GRP-A-SG2		
7	Internal Gas Analysis - Moisture 10,000 ppmv limit	750-1018	3 (0)	3 (0)	

For sales enquiries, or further information, please contact our sales office at:

ISOCOM Limited • 2 Fern Court • Bracken Hill Business Park • Peterlee • County Durham • SR8 2RR• United Kingdom
Email: sales@isocom.uk.com • Tel: +44 (0)191 416 6546

**MIL-PRF 38534 TYPICAL QCI TESTING
PROCESS FLOW**

Group	Sub Group	Parameters	Quantity (accept number)		
			TM	K	H
A (CI)	1	Static tests at +25°C	Datasheet	100%	100%
	2	Static tests at max. rated operating temp.	Datasheet	100%	100%
	3	Static tests at min. rated operating temp.	Datasheet	100%	100%
	9	Switching tests at +25°C	Datasheet	100%	100%
B (PI)	1	Physical dimension	883-2016	2 (0)	2 (0)
	4	Internal visual and mechanical	883-2014	1 (0)	1 (0)
	5	Bond strength: Ultrasonic (on hotplate)	883-2011	2 (0)	2 (0)
	6	Die shear strength	883-2019	2 (0)	2 (0)
	7	Solderability	883-2003	1 (0)	1 (0)
	8	Seal: a. Fine, b. Gross	883-1014	N/A	15 (0)
C (PI)	1	External visual	883-2009	5 (0)	5 (0)
		Temperature Cycling	883-1010	5 (0)	5 (0)
		Constant acceleration	883-2001	X	5 (0)
		Seal (fine and gross)	883-1014	5 (0)	5 (0)
		PIND	883-2020	5 (0)	5 (0)
		Visual examination	883-1010	5 (0)	5 (0)
		End-point electrical	GRP-A	5 (0)	5 (0)
	2	Steady-state life test	883-1005	22 (0) or 5 (0)	22 (0) or 5 (0)
		End-point electrical	GRP-A	22 (0) or 5 (0)	22 (0) or 5 (0)
	3	Internal gas analysis Moisture 10,000 ppmv limit	883-1018	3 (0) or 5 (1)	3 (0) or 5 (1)
D (PI)	1	Thermal shock	883-1011	5 (0)	5 (0)
		Stabilization bake	883-1008	5 (0)	5 (0)
		Lead integrity	883-2004	1 (0)	1 (0)
		Seal: a. Fine, b. Gross	883-1014	5 (0)	5 (0)

For sales enquiries, or further information, please contact our sales office at:

ISOCOM Limited • 2 Fern Court • Bracken Hill Business Park • Peterlee • County Durham • SR8 2RR • United Kingdom
Email: sales@isocom.uk.com • Tel: +44 (0)191 416 6546

Summary of key differences between MIL-PRF 19500 and MIL-PRF 38534 for space level testing:

	MIL-PRF 19500 - JANS	MIL-PRF 38534 – Class K
No. of Operation (Screening) Steps	31	33
Optional Hermeticity Testing	Occurs post P.I.N.D	Occurs post Internal Visual
Temp cycle – No. of Temp Cycles	20	10
Acceleration - Amount of g force	5000g	3000g
HTRB – No. of hours	48	96
Burn-in – No. of hours	240 hrs in one successive burn-in	320 hrs (2 x 160 hrs with interim electrical)
PDA post burn-in	5% after 240 hrs burn-in	2% after second 160 hrs burn-in

For sales enquiries, or further information, please contact our sales office at:

ISOCOM Limited • 2 Fern Court • Bracken Hill Business Park • Peterlee • County Durham • SR8 2RR• United Kingdom
 Email: sales@isocom.uk.com • Tel: +44 (0)191 416 6546

DISCLAIMER

The information provided on the datasheet is for preliminary and general information only. We do not warrant that the information contained on the datasheet is suitable for your intended use, nor do we accept responsibility for loss suffered as a result of reliance by you upon the accuracy or currency of information contained on the datasheet. In particular, you should not make any investment or commercial decision on the basis of the information contained on the datasheet. You should obtain independent professional advice and make your own further enquiries before making any investment or commercial decision or taking any further action in any way related to the information contained on the datasheet.

We are not aware of any inaccuracy in the information contained on the datasheet. However, we do not warrant the accuracy, adequacy or completeness of such information.

We reserve the right to remove or alter any of the information contained on the datasheet at any time. However, we do not guarantee the currency of the information contained on the datasheet, nor do we undertake to keep the datasheet updated.

ISOCOM Limited
2 Fern Court
Bracken Hill Business Park
Peterlee
County Durham
SR8 2RR
United Kingdom

W – www.isocom.uk.com
E – sales@isocom.uk.com
T - +44 (0) 191 416 6546



ISOCOM Limited is AS9100 certified for the design and manufacture of electronic and optoelectronic components.

For sales enquiries, or further information, please contact our sales office at:

ISOCOM Limited • 2 Fern Court • Bracken Hill Business Park • Peterlee • County Durham • SR8 2RR • United Kingdom
Email: sales@isocom.uk.com • Tel: +44 (0)191 416 6546